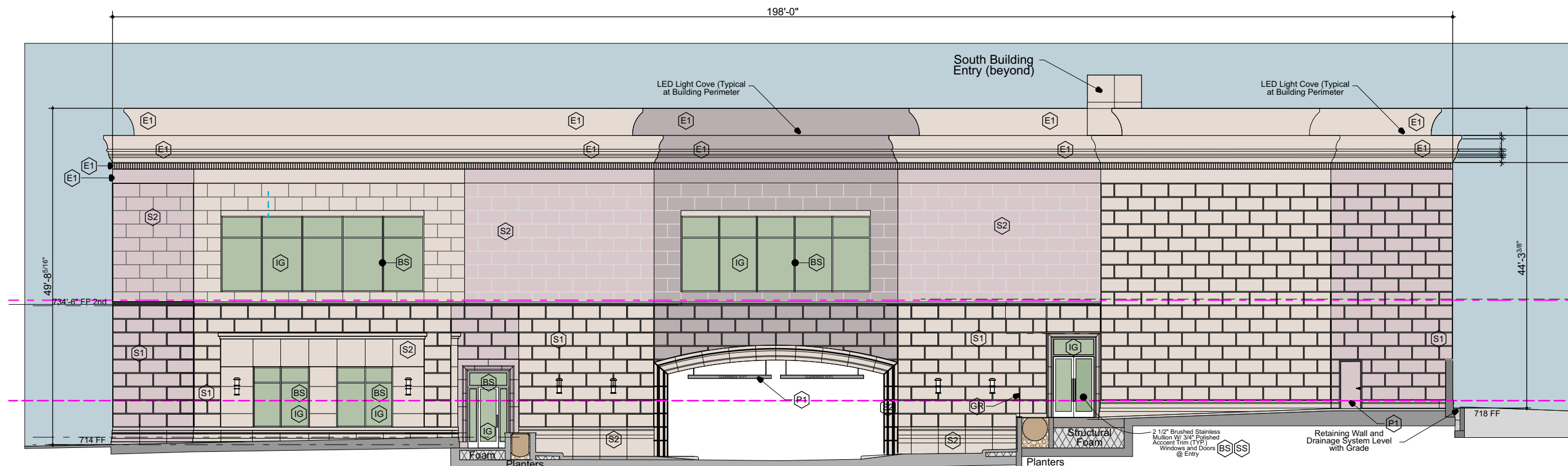


/Users/robertstensland/Documents/The Stensland Group/Projects 2019/AA_Govindji/Govindji 5/WWW_CITY COMMENTS.pln



TOTAL AREA	9,378 S.F.
GLASS WINDOWS AND DOORS	570 S.F. 6.1%
CURTAIN WALL (GLASS)	0 S.F. 0.0%
NON-GLASS AREA	8,808 S.F.
CAST STONE w/ Reveals, CASTSTONE	6,477 S.F. 73.5%
STUCCO	2,178 S.F. 24.7%
POLISHED STAINLESS STEEL	5 S.F. 0.1%
STEEL DOOR OR LOUVERS (Painted)	22 S.F. 0.3%
BRUSHED STAINLESS STEEL	126 S.F. 1.4%

WEST ELEVATION
SCALE: 1/16" = 1'-0" **06**



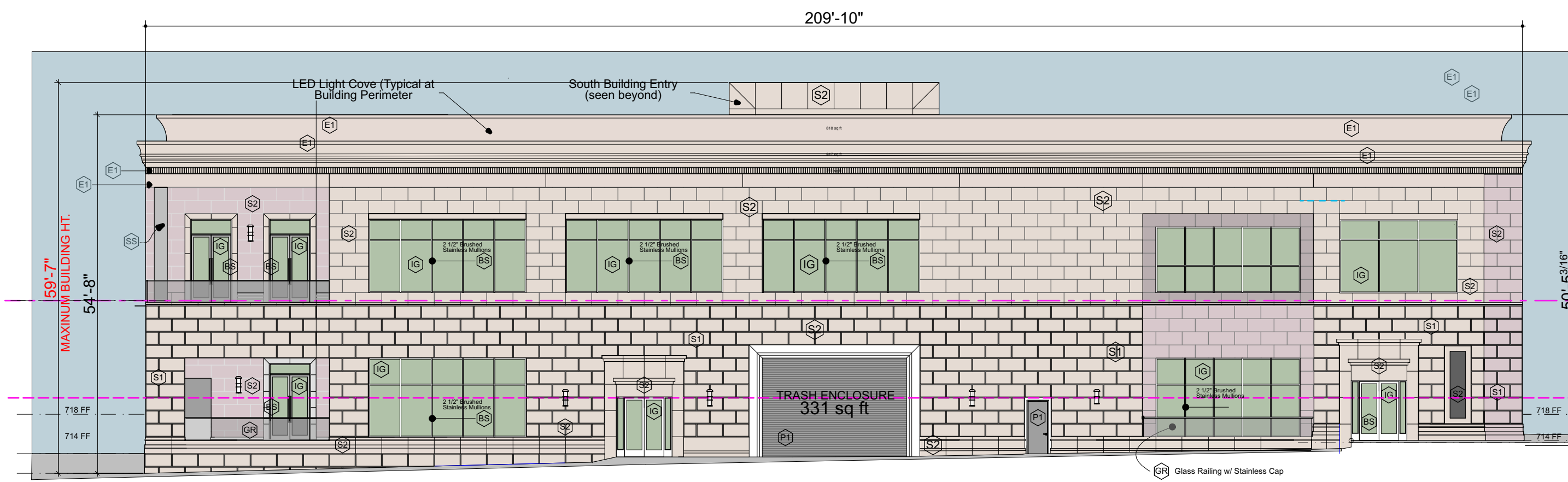
TOTAL AREA	9,266 S.F.
GLASS WINDOWS AND DOORS	1,994 S.F. 21.5%
CURTAIN WALL (GLASS)	506 S.F. 5.5%
NON-GLASS AREA	6,766 S.F.
CAST STONE w/ Reveals, CASTSTONE	4,751 S.F. 70.2%
STUCCO	1,586 S.F. 23.4%
POLISHED STAINLESS STEEL	16 S.F. 0.2%
STEEL DOOR OR LOUVERS (Painted)	0 S.F. 0.0%
COVE CEILING (not part of wall area)	0 S.F. 0.0%
BRUSHED STAINLESS STEEL	413 S.F. 6.2%

SOUTH ELEVATION @ MOTOR COURT
SCALE: 1/16" = 1'-0" **05**



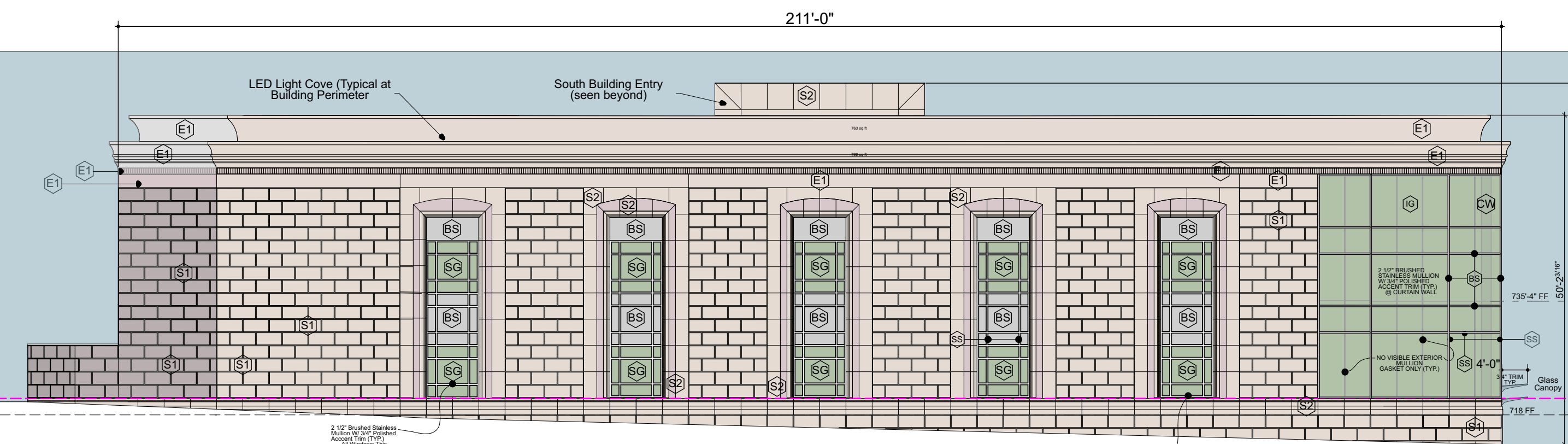
TOTAL AREA	9,185 S.F.
GLASS WINDOWS AND DOORS	985 S.F. 6.67%
CURTAIN WALL (GLASS)	0 S.F. 0.0%
NON-GLASS AREA	8,200 S.F.
CAST STONE w/ Reveals, CASTSTONE	5,456 S.F. 66.5%
STUCCO	1,601 S.F. 19.5%
BRUSHED STAINLESS STEEL	1,096 S.F. 12.0%
STEEL DOOR OR LOUVERS (Painted)	0 S.F. 0.0%
COVE CEILING (not part of wall area)	0 S.F. 0.0%
POLISHED STAINLESS STEEL	45 S.F. 2.0%

NORTH ELEVATION MOTOR COURT
SCALE: 1/16" = 1'-0" **04**



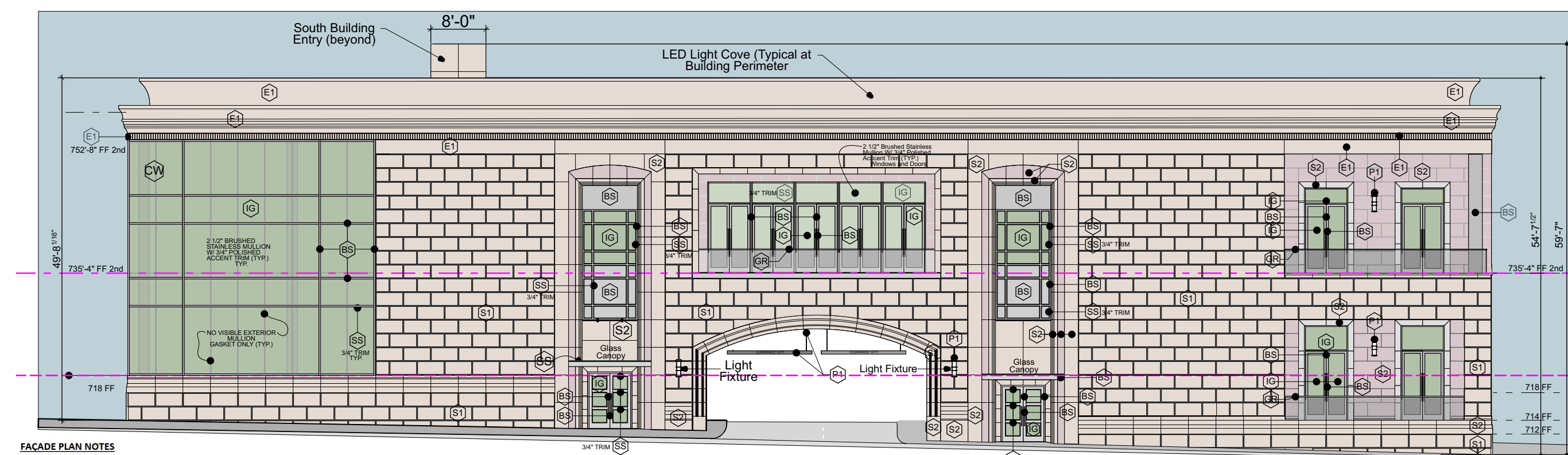
TOTAL AREA	11,033 S.F.
GLASS WINDOWS AND DOORS	2,136 S.F. 19.4%
CURTAIN WALL (GLASS)	0 S.F. 0.0%
NON-GLASS AREA	8,897 S.F.
CAST STONE w/ Reveals, CASTSTONE	5,346 S.F. 71.3%
STUCCO	1,876 S.F. 21.1%
POLISHED STAINLESS STEEL	0 S.F. 0.0%
STEEL DOOR OR LOUVERS (Painted)	323 S.F. 3.63%
BRUSHED STAINLESS STEEL	352 S.F. 3.97%

NORTH ELEVATION
SCALE: 1/16" = 1'-0" **03**



TOTAL AREA	10,042 S.F.
GLASS WINDOWS AND DOORS	490 S.F. 6.1%
CURTAIN WALL (GLASS)	958 S.F. 9.5%
NON-GLASS AREA	8,594 S.F.
CAST STONE w/ Reveals, CASTSTONE	5,339 S.F. 62.1%
STUCCO	2,217 S.F. 25.8%
STAINLESS STEEL (Brushed)	983 S.F. 11.6%
STEEL DOOR OR LOUVERS (Painted)	0 S.F. 0.0%
POLISHED STAINLESS STEEL	53 S.F. 0.5%

SOUTH ELEVATION
SCALE: 1/16" = 1'-0" **02**



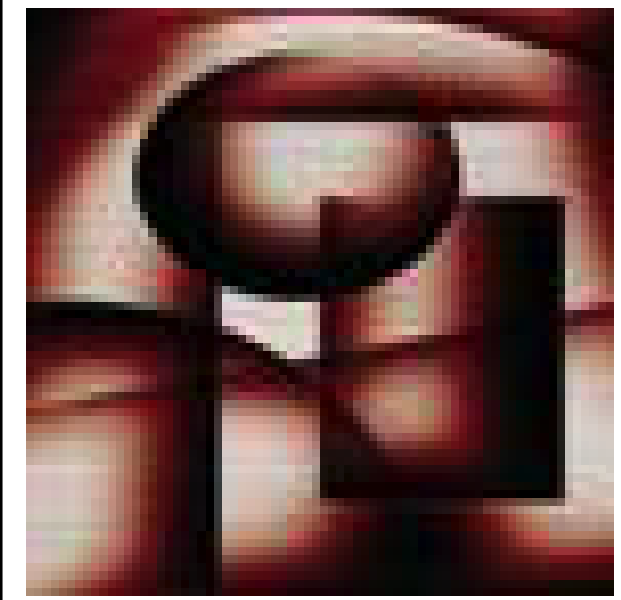
TOTAL AREA	9,830 S.F.
GLASS WINDOWS AND DOORS	991 S.F. 7.0%
CURTAIN WALL (GLASS)	1,241 S.F. 13.48%
NON-GLASS AREA	7,908 S.F.
CAST STONE w/ Reveals, CASTSTONE	5,672 S.F. 71.72%
STUCCO	1,768 S.F. 22.36%
POLISHED STAINLESS STEEL	45 S.F. 0.5%
STEEL DOOR OR LOUVERS (Painted)	10 S.F. 0.13%
BRUSHED STAINLESS STEEL	413 S.F. 5.22%

EAST ELEVATION
SCALE: 1/16" = 1'-0" **01**

MATERIAL	COLOR / FINISH	MANUFACTURER
DOORS AND WINDOWS	STAINLESS US320 - 3/4" POLISHED TRIM US32 WHERE NOTED	KAWNEER
MULLIONS	STAINLESS US320 (TYPICAL ALL WINDOWS)	KAWNEER
MULLION 3/4" ACCENT TRIM	STAINLESS 3/4" POLISHED TRIM US32 WHERE NOTED	KAWNEER
GLASS	SOLAR BAN 70 XL + CLEAR GLASS - COLOR ATLANTICA GLASS	VITRO ARCHITECTURAL GLASS
GLASS (1/4" non-voided w/ insulated wall back-up)	SOLAR BAN 70 XL BACK PAINTED SPANDREL COLOR ATLANTICA GLASS	VITRO ARCHITECTURAL GLASS
WINDOW INFILL PANELS	STAINLESS US320 WINDOW INFILL PANELS	KAWNEER
CURTAIN WALL	STAINLESS US320 - 3/4" POLISHED TRIM US32	KAWNEER
MULLIONS	STAINLESS US320 - 3/4" POLISHED TRIM US32 WHERE NOTED	KAWNEER
MULLION 3/4" ACCENT TRIM	STAINLESS 3/4" POLISHED TRIM US32 WHERE NOTED	KAWNEER
GLASS (1/4" non-voided w/ low-e coating)	SOLAR BAN 70 XL + CLEAR GLASS - COLOR ATLANTICA GLASS	VITRO ARCHITECTURAL GLASS
MULLIONS	STAINLESS 3/4" POLISHED TRIM US32 WHERE NOTED	KAWNEER
NON WINDOW MATERIALS		
CAST STONE	CUSTOM COLOR / TANI / BUFF / per sample	STONE LEGENDS - Dallas TX
CAST STONE	CUSTOM COLOR / TANI / BUFF / per sample	STONE LEGENDS - Dallas TX
STUCCO	MOONDANCE 3027L (66) / LaHabra Stucco Solutions Parex USA Color Collection	PARAX USA
GLASS STAR ENCLOSURE	CLEAR GLASS 1 3/16" W/ US32 STAINLESS ACCENTS	GLASS and Metal Craft - Waco TX
CABLE HANDRAIL	STAINLESS US320 RAILS AND CABLE	NOTUL - Houston TX
GLASS HANDRAIL	STAINLESS US320 RAILS / GLASS (CLEAR)	DALLAS FLAT GLASS - Carrollton TX
PAINTED METAL	SHERWIN WILLIAMS COLOR: SW7016 MINIFUL GRAY	SHERWIN WILLIAMS
PAINTED STUCCO	SHERWIN WILLIAMS COLOR: SW7005 PURE WHITE	SHERWIN WILLIAMS

FAÇADE PLAN NOTES

- This Façade Plan is for conceptual purposes only. All building plans require review and approval by Development Services.
- All mechanical units shall be screened from public view as required by the Zoning Ordinance.
- When permitted, exposed utility boxes and conduits shall be painted to match the building.
- All signage areas and locations are subject to approval by Development Services.
- Roof access shall be provided internally, unless otherwise permitted by the Chief Building Official.
- An on-site mockup of the building materials to be used on the structure shall be installed and reviewed by the Planning Division. Materials shall not be placed on the structure until a green tag is received by the Planning Division.
- An approved Façade Plan shall be posted onsite at all times.



The Stensland Group

ARCHITECTURE INTERIORS PLANNING

214 - 680 - 1387 Office

5151 Bent Tree Forest Dr.
Suite 560
Dallas, Texas 75248

E-mail
RobertStensland@mac.com

9/09/19



GOVINDJI'S
THE GATE
John Hickman Parkway
UNVEST ADDITION BLOCK A
VOL. 2010, PG. 98 Lot 15, 16
Frisco, Texas 76548

MARK	DATE	DESCRIPTION
	9/04/19	SITE PLAN REVIEW
	9/09/19	SITE PLAN REVIEW

PROJECT NO:
MODEL FILE:
DRAWN BY: RSS
CHKD BY:
COPYRIGHT

SHEET TITLE

Exterior Elevations

A400